

HENDERSON WHEEL & WAREHOUSE SUPPLY

2011 HEAVY DUTY STEEL TRUCK WHEEL CATALOG November 2011

Hub Pilot 8-Hole Wheels	Page 3
Hub Pilot 10-Hole Wheels	Page 4
Stud Pilot 6-Hole and 10-Hole Wheels.....	Pages 5 - 6
22.5" Duplex Wheels	Pages 7 - 9
Chevrolet / GMC and Ford Wheels.....	Page 10
Heavy Duty Nuts & Lug Nut Covers.....	Pages 11 - 13
Wheel Guards	Page 14
Demountable Rims	Page 15 - 16
Demountable Rims Nuts & Studs	Page 17
Lock Rings	Page 18



**PRACTICE WHEEL AND RIM SAFETY
AVOID A THREAT TO LIFE AND LIMB**

- **Don't work on a rim or wheel assembly until you understand safety warnings and manufacturers' instructions.**
- **Don't mismatch rim parts.**
- **Scrap cracked, worn, rusted or distorted components.**
- **Inspect wheels and rims for wear and defects at every tire demounting.**

**For safety information, please call or email Henderson Wheel at
warranty@hendersonwheel.com**

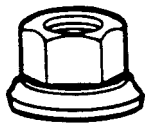
Additional Information at www accuridewheels.com or www hayes-lemmerz.com



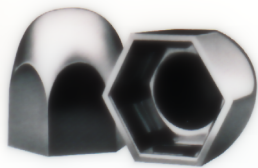
Hub-Piloted Dual Mounting 8-Hole, 275 mm Bolt Circle



Wheel Size	Tire Sizes	Part No.	Color	Hand Holes	Capacity	Center Bore	Wgt
17.5" x 6.75"	9.00	F28656	Grey	4	5355#	221 mm	54
19.5" x 6.75"	8.00	F50180	Grey	4	5000#	221 mm	59
22.5" x 8.25"	11.00	F28484W	White	4	7300#	221 mm	81
24.5" x 8.25" (Special Order)	11.00, 285/75	88790W	White	4	7400#	221.11 mm	78



Part No.	Thread	Hex	Description
E5991	M22 x 1.5	1-1/2"	Two-Piece Flange Nut



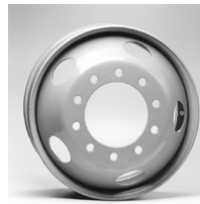
Part No.	Description	Fits
000182	Hug-A-Lug Nut Cover Flange Nut	1-1/2" Hex



**Hub-Piloted Dual Mounting, 220 mm Center Bore
10-Hole, 285.75 mm Bolt Circle**



(1)

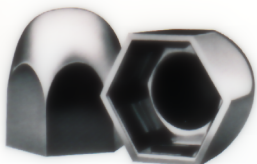


(2)

Wheel Size	Tire Sizes	Part No.	Color	Hand Holes	Capacity	Wgt	Picture
22.5" x 8.25"	11.00	F50408W	White	2	7400#	70	1
		F50408	Grey	2	7400#	70	1
		F50308W	White	2	7400#	82	1
		F50308	Grey	2	7400#	82	1
		F50307	Grey	5	7400#	79	2
		F50487	Grey	5	7400#	68	2
22.5" x 9" Steer Wheel Only	12.00, 12.50 12.75, 295/75, 305/70R, 315/80R	F29039	Grey	5	10,000#	103	2
22.5" x 9" Dual Wheel	12.00, 12.50 12.75, 295/75, 305/70R, 315/80R	F29300	Grey	5	10,000#	108	2
24.5" x 8.25"	11.00, 285/75	F28409	Grey	2	7300#	86	1
		F28409W	White	2	7300#	86	1
		F50379W	White	2	7400#	90	1
		F50381W	White	5	7400#	88	2



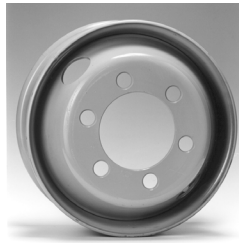
Part No.	Thread	Hex	Description
E6000A	M22 x 1.5	33 mm	Single Two-Piece Flange Nut



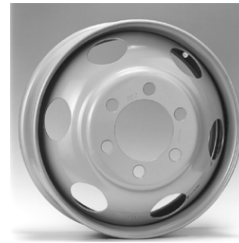
Part No.	Description	Fits
000181	Hug-A-Lug Nut Cover Flange Nut	1-1/2" Hex



Stud-Piloted Dual Mounting, 6-1/2" Center Bore 6-Hole, 8-3/4" Bolt Circle



(1)



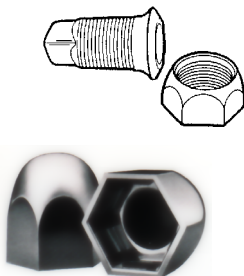
(2)

Wheel Size	Tire Size	Part No.	Color	Hand Holes	Capacity	Picture
17.5" x 6.75" Low Boy Wheel- 15" Low Boy Replacement if all wheels changed.	9.00	F28145	Grey	2	5070#	1
19.5" x 6" (Special Order)	8.00	F29388	Grey	2	3640#	1
22.5" x 6.75" (Special Order)	9.00	F28157	Grey	6	4610#	2

Stud-Piloted Dual Mounting, Double Cap Nut 10-Hole, 8-3/4" Bolt Circle, 6-1/2" Center Bore



Wheel Size	Tire Size	Part No.	Color	Hand Holes	Capacity
17.5" x 6.75" Replaces 15" Low Boy if all wheels changed.	9.00	91834W	White	2	5070#



Part No.	Description
E7895-R & L	Inner 3/4" Cap Nut
E5977-R & L	Outer 1-1/8" Cap Nut
000150	Hug-A-Lug Nut Cover Stud Pilot



Stud-Piloted Dual Mounting, Double Cap Nut 10-Hole, 11-1/4" Bolt Circle, 8.72" Center Bore



(1)

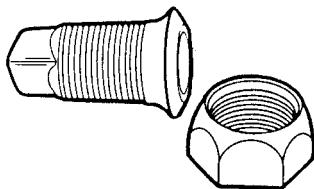


(2)

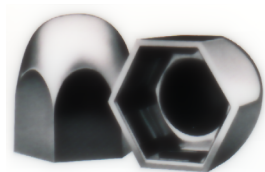


(3)

Wheel Size	Tire Size	Part No.	Color	Hand Holes	Capacity	Picture
22.5" x 7.5"	10.00	F27403	Grey	2	6610#	2
22.5" x 8.25"	11.00	F27404W	White	2	7400#	1
24.5" X 8.25"	11.00, 285/75	F27406W	White	2	7300#	1
22.5" X 9.00" Dual Wheel	12.00, 12.50 12.75, 295/75 305/70R, 315/80R	F28510(1)	Grey	2	9000#	2
(1) Because of the thicker disc, longer studs must be used. When longer studs are used, wheels with thinner discs cannot be used in a dual assembly because the inner cap nut can bottom out before the wheel is securely clamped.						
22.5" X 9.00" Steer Wheel Only (Special Order)	12.00, 12.50 12.75, 295/75 305/70R, 315/80R	F28192	Grey	1	9000#	3



Part No.	Description
E7895-R & L	Inner 3/4" Cap Nut
E5977-R & L	Outer 1-1/8" Cap Nut



Part No.	Description	Fits
000150	Hug-A-Lug Nut Cover Stud Pilot	1-1/2" Hex

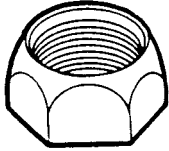


Stud-Piloted Mounting / Outer Cap Nut

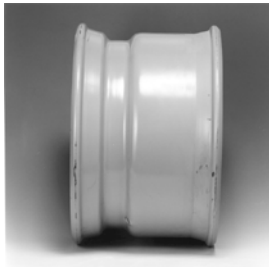
Front Duplex Wheel

10 Hole, 11-1/4" Bolt Circle, 8.72" Center Bore

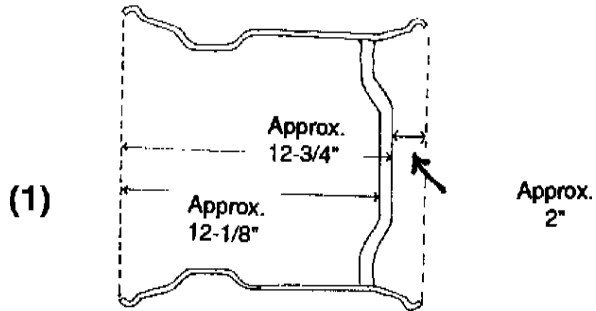
Tire: 15 x 22.5, 16.5 X 22.5, 385/65R X 22.5, 425/65R X 22.5



Part No.	Description
E5977-R & L	1-1/8" Outer Cap Nut



Wheel Size	Part No.	Wheel Picture	Wheel Capacity
22.5" x 12.25" (Special Order)	F29816	(1)	10,000 #



Normally a front Axle wheel.

Consider tire clearance when switching to duplex wheels.

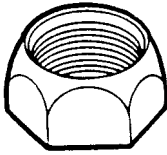


Stud Piloted Mounting / Outer Cap Nut

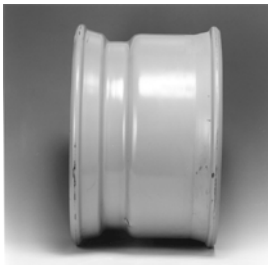
Duplex Rear Wheel

10 Hole, 11-1/4" Bolt Circle, 8.72" Center Bore

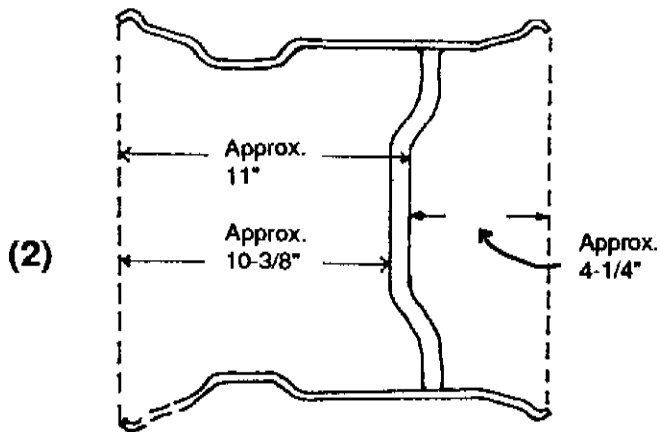
Tire: 16.5 x 22.5, 18 x 22.5, 425/65R x 22.5, 445/65R x 22.5



Part No.	Description
E5977-R & L	1-1/8" Outer Cap Nut



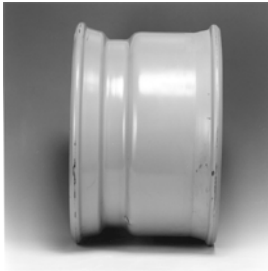
Wheel Size	Part No.	Wheel Picture	Wheel Capacity
22.5" x 13" (Special Order)	F29819	(2)	10,000 #



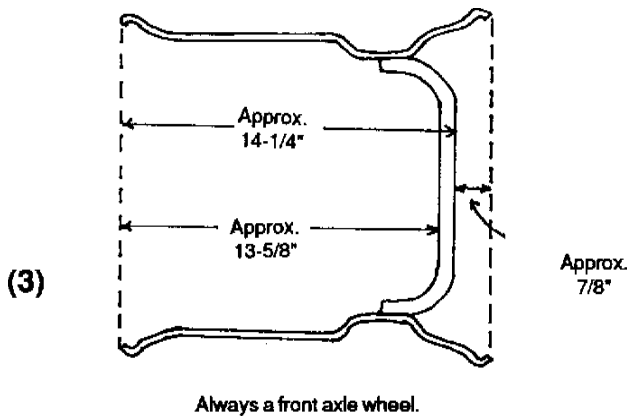
Normally replaces duals on drive (rear) and trailer axles.

Consider tire clearance when switching to duplex wheels.

Stud-Piloted Mounting / Heavy Duty Outer Cap Nut
Single Front Wide Wheel
10 Hole, 13-3/16" Bolt Circle / 10.69" Center Bore
Tire: 16.5 x 22.5, 18 x 22.5, 425/65R x 22.5, 445/65R x 22.5



Wheel Size	Part No.	Wheel Picture	Wheel Capacity
22.5" x 13" (Special Order)	F28465	(3)	10,210 #



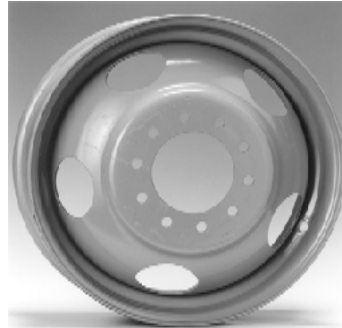
Consider tire clearance when switching to duplex wheels.



**Chevrolet and GMC
Flat Face Wheels
Hub-Piloted Dual Mounting**



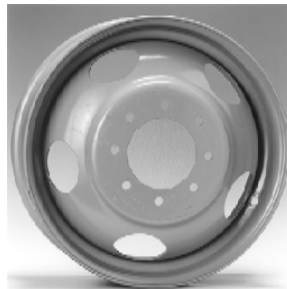
(1)



(2)

Truck Size	Wheel Size	Bolt Holes	Bolt Circle	Part No.	Center Bore	Hand Hole	Tire Size	Capacity	Picture	Clamping Plate
1 ton	19.5" X 6.0"	8	8 - 6-1/2"	F29015	4.56	4	8.0	2540#	1	722140
	(Special Order)									
1 ton	19.5" x 6.0"	10	10 - 7-1/4"	F29667	5.25	5	8.0	3000#	2	-
1 1/2 to 2 ton	22.5" X 6.75"	10	8 - 3/4"	F28160	6.25	5	9.00	4675#	2	-

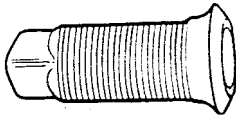
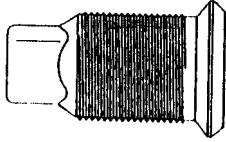
**Ford 1 Ton Dual Wheels
Hub-Piloted Dual Mounting
8 Hole, 225mm Bolt Circle
170.10mm Center Bore**



Wheel Size	Year	Part No.	Hand Hole	Capacity
19.5" X 6.00"	1998-2004	F29584	5	3750#
19.5" X 6.00RW"	2005-2012	F29884	5	3750#

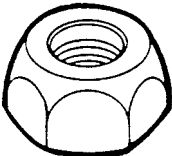
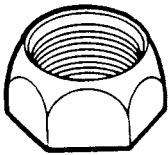


Heavy Duty Nuts Steel Wheel Inner Nuts



Part No.	Thread O.D.	Thread I.D.	O.A. Length	Application
E7895-R & L (Hardened)	1-1/8"-16	3/4"-16	2-7/32"	Steel Wheel Inner Nut
E7896-R & L (Hardened)	1-1/8"-16	3/4"-16	2-9/16"	Long Inner Nut. Used when steel wheel is used on the inside dual and aluminum wheel on the outside dual.
E7897-R & L (Hardened)	1-1/8"-16	3/4"-16	3-1/16"	Extra Long Steel Inner Nut (Steel Inner Wheel & Aluminum Outer Wheel)

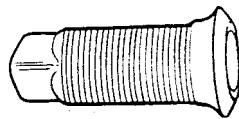
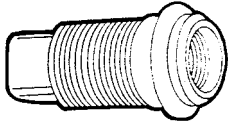
Steel Wheel Outer and Front Nuts



Part No.	Thread	Hex	High	Application
E5977-R & L (Hardened)	1-1/8"-16	1-1/2"	7/8"	1-1/8" Outer & Front Nut for Steel & Aluminum Wheels
E5652-R & L	3/4"-16	1-1/2"	7/8"	3/4" Front Nut for Steel Wheels

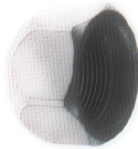
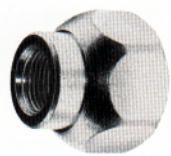
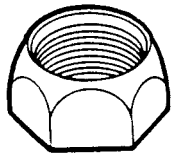


Heavy Duty Nuts Aluminum Inner Wheel Nuts



Part No.	Thread O.D.	Thread I.D.	O.A. Length	Application
E5988-R & L (Hardened)	1-1/8"-16	3/4"-16	3-1/16"	Aluminum wheel inner nut.
E7896-R & L (Hardened)	1-1/8"-16	3/4"-16	2-9/16"	Inner Wheel Nut for steel inner wheel and aluminum outer wheel.
E7897-R & L	1-1/8"-16	3/4"-16	3-1/16"	Extra Long Inner Nut (Steel Inner Wheel & Aluminum Outer Wheel)

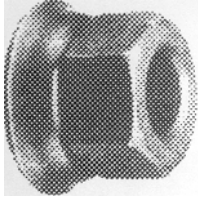
Heavy Duty Nuts Aluminum Outer and Single Wheel Nuts



Part No.	Thread	Hex	High	Application
E5977-R & L (Hardened)	1-1/8"-16	1-1/2"	7/8"	1-1/8" Aluminum Wheel Outer & Front Nut
E5995-R & L	3/4"-16	1-1/2"	1-3/8"	3/4" Single Nut for rear and trailer using Alcoa wide base wheels.
E5996-R & L	1-1/8"-16	1-1/2"	1"	"Long Grip" Nut. Used on front 1-1/8" studs using Alcoa wide base wheels.

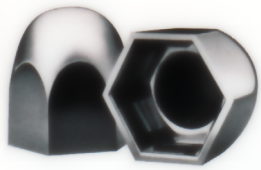


**Heavy Duty Nuts
Hub Piloted Single Nuts
Steel Wheels**



Part No.	Thread	Hex	High	Application
E6000A	M22 x 1.5	33mm	32mm	Two-Piece Washered Nut for 10 Stud Hub Piloted Wheel
E5991	M22 x 1.5	1-1/2"	1-1/2"	Two-Piece Washered Nut for 8 Stud Hub Piloted Wheel

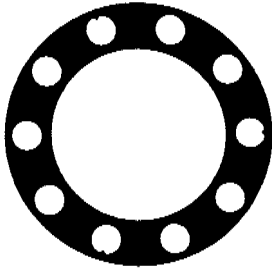
Hug-A-Lug Nut Covers



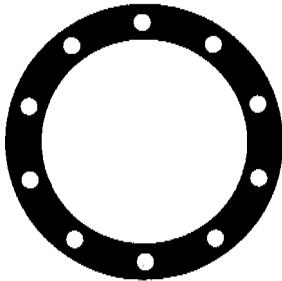
Type	Description	Part No.
Hub Pilot	1-1/2" Hex Flange Nut	000182
Hub Pilot	33 mm Hex Flange Nut	000181
Stud Pilot	1-1/2" Hex	000150



Wheel Guards



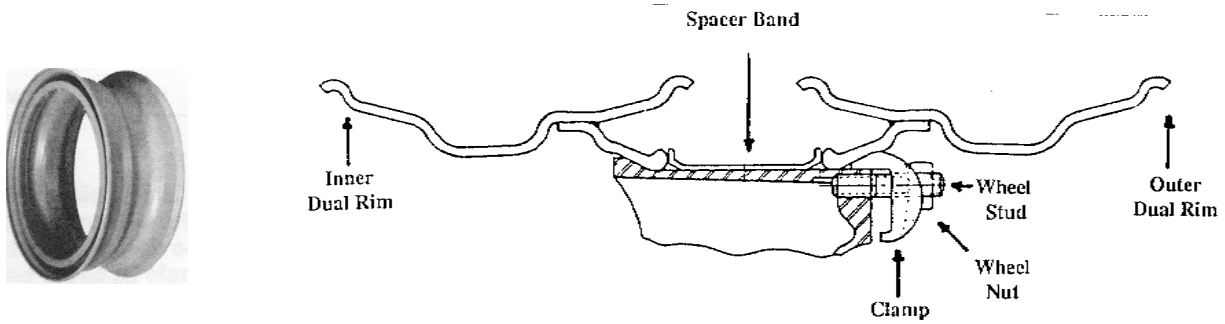
The Wheel-Guard is a nylon separator plate, approximately .040" thick. It is placed between the hub or drum and the wheel, and/or between two wheels in a dual application. The Wheel-Guard is recommended in severe applications where corrosion and/or wear has been identified as a problem. Both aluminum and steel wheels can benefit from the use of the Wheel-Guard. Care must be exercised in centering the wheel-guard prior to torquing and stud length must be checked to provide adequate nut engagement as each plate is approximately .040" thick.



Application	Use Part No.
10 Hole, 11-1/4" bolt circle, stud piloted; 3/4" diameter studs	F5902
10 Hole, 11-1/4" bolt circle, stud piloted; 7/8" and 1-1/8" diameter studs	F5901
10 Hole, 285.75mm bolt circle, hub piloted; 22mm diameter studs	F5903



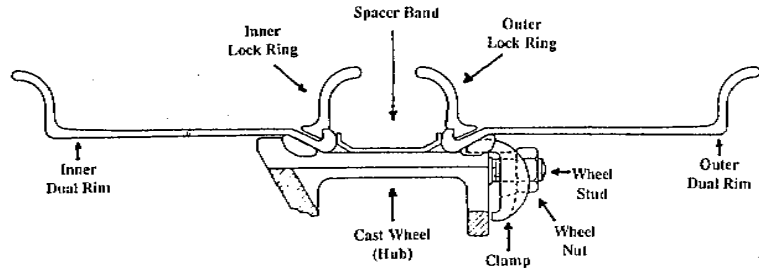
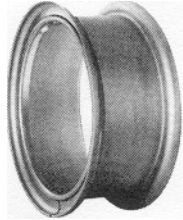
TUBELESS DEMOUNTABLE RIMS



Capacity Size	Application	Part No.	Capacity Lbs.
17.5" X 6.75"	Tire 9R	F31868175	4805
22.5" X 8.25"	Tire 11.00	F30391225	7300
24.5" X 8.25	Tire 11.00	F30391245	7300



TUBE TYPE DEMOUNTABLE RIMS (All Special Order)

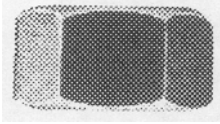


Rim Size	Application	Rim & Ring(s) Kit Number	Kit Contents	Capacity Lbs
15" x 6.5"	Tire 8.25	6515LWD	B6515LWD Base R6515LW Ring	4290
15" X 7.5"	Tire 10.00	7515LWD	B7515LWD Base R8015LW Ring	5520
20" X 6.5"	Tire 8.25	6520LWD	B6520LWD Base R6520LW Ring	4610
20" X 7.5"	Tire 10.00	7520LWD	B7520LWD Base R8020LW Ring	6400
20" X 8"	Tire 11.00	8020LWD	B8020LWD Base R8020LW Ring	7600
20" X 9.0"	Tire 12.00	9020LWD	B9020LWD Base R8020LW Ring	9230
20" X 10.0"	Three Piece MD Style Tire 14.00	1020MD	B1020MD Base F1020M Flange LR20M Ring	9610
24" X 8"	Tire 11.00	8024LWD	B8024LWD R8024LW	7600
24" X 9"	Tire 12.00	9024LWD	B9024LWD Base R8024LW Ring	9230
24" X 10"	Tire 14.00	1024MD	B1024MD Base F1024M Flange LR24M Ring	9740



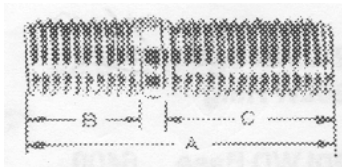
DEMOUNTABLE RIM ATTACHING PARTS
Euclid Wall Charts Available

Coarse Demountable Rim Nuts



Part No.	Thread	Hex	Description
E4963	3/4"-10	1-1/4"	3/4" Coarse Nut

Coarse Studs for Spoke Wheels, Grade 8



Part No.	Thread	A	B	C
E4956A	3/4"-10	3"	1-1/16"	1-3/4"

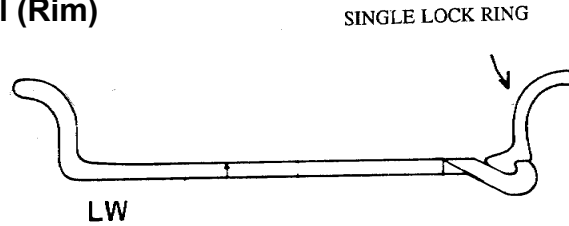


LOCK RINGS

Motor Wheel (Goodyear) and Budd LW Rings

LW 2-Piece Tube-Type Wheel (Rim)

Single Lock Ring



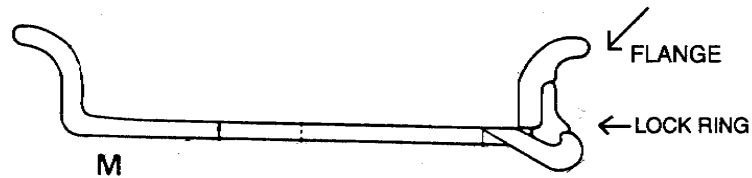
Wheel (Rim) Marking	Ring Part Number	Ring Marking
15 x 6.5 LW	R6515LW	R15 x 6.5-7.0 LB-LW
15 x 7.5 LW	R8015LW	R15 x 7.5-8.0-9.0 LB-LW
20 x 6.5 LW	R6520LW	R20 x 6.5-7.0 LB-LW
20 x 7.5 LW	R8020LW	R20 x 7.5-8.0-9.0 LB-LW
20 x 8.0 LW	R8020LW	R20 x 7.5-8.0-9.0 LB-LW
20 x 9.0 LW	R8020LW	R20 x 7.5-8.0-9.0 LB-LW
24 x 8.0 LW	R8024LW	R24 x 7.5-8.0-9.0 LB-LW

(All Special Order)

Motor Wheel (Goodyear) and Budd M-Rings

3-Piece Wheel (Rim)

Double Lock Ring



Wheel (Rim) Marking No.	Flange Part No.	Flange Marking	Lock Ring Part No.	Lock Ring Marking
20 x 7.5 M	F7520M	F20 x 7.5-8.5M	LR20M	LR20 x 7.5-8.5-10.0M
20 x 8.5 M	F7520M	F20 x 7.5-8.5M	LR20M	LR20 x 7.5-8.5-10.0M
20 x 10 M	F1020M	F20 x 10M	LR20M	LR20 x 7.5-8.5-10.0M
24 x 7.5M	F7524M	F24 x 7.5-8.5M	LR24M	LR24 x 7.5-8.5-10.0M
24 x 8.5M	F7524M	F24 x 7.5-8.5M	LR24M	LR24 x 7.5-8.5-10.0M
24 x 10 M	F1024M	F24 x 10M	LR24M	LR24 x 7.5-8.5-10.0M

****Match the marking in the wheel or rim with the marking on the ring.****



WARNING

**Wheel and tire servicing can be dangerous.
To protect life and limb, be sure you understand
and follow all mounting, demounting, maintenance,
inspection, operational procedures and
safety instructions and practices.**

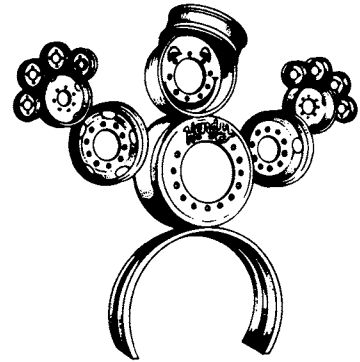
For complete information contact:

**Henderson Wheel & Warehouse Supply
1825 South 300 West
Salt Lake City, UT 84115**

or

**Henderson Wheel & Supply
112 West 34th Street
Boise, ID 83714**

**Come see us at
one of our six
Henderson
Locations:**



Henderson Wheel and Warehouse Supply
1825 South 300 West • Salt Lake City, UT 84115
Tel: (801)486-2073 • Toll Free: (800)748-5111 • Fax: (801)486-0353

Henderson Parts Pros
3144 Grant Avenue • Ogden, UT 84401
Tel: (801)393-0440 • Toll Free: (800)627-3956 • Fax: (801)621-0781

Henderson Parts Pros
7480 South State Street • Midvale, UT 84047
Tel: (801)566-6566 • Fax: (801)352-2535

Henderson Parts Pros
333 North State Street • Orem, UT 84057
Tel: (801)229-2333 • Toll Free: (888)586-8774 • Fax: (801)224-8612

Henderson Parts Pros
4151 West 5415 South • Kearns, UT 84118
Tel: (801)965-1611 • Fax: (801)965-1616

Henderson Wheel & Supply
112 W. 34th Street • Boise, ID 83714
Tel: (208)344-6525 • Toll Free: (800)248-3444 • Fax: (208)336-1296