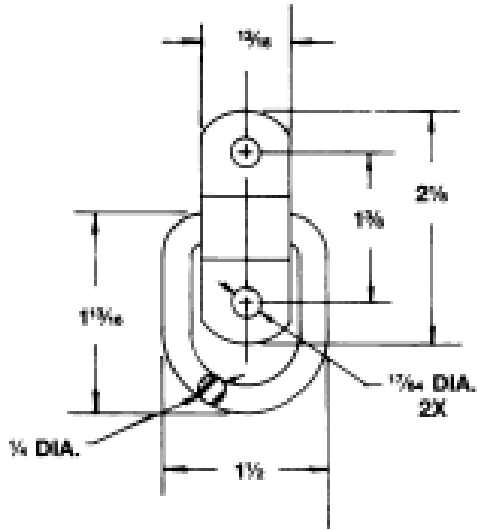
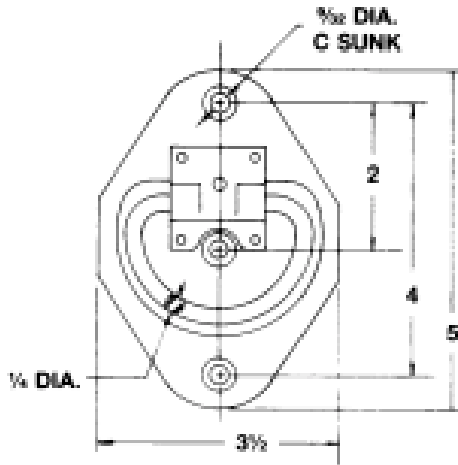




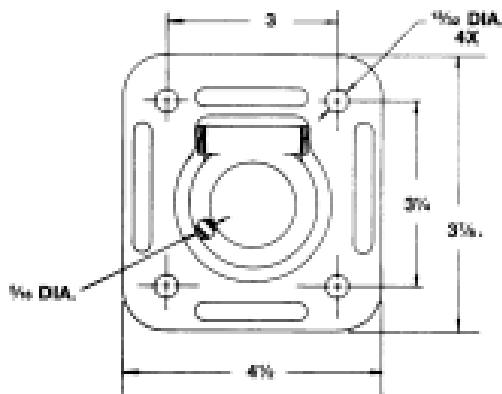
ROPE RINGS



Part Number	Description
B-20	Surface mount ring and formed steel clamp, Ring is welded for additional capacity. Zinc plated. Rated capacity is 1200 lbs.



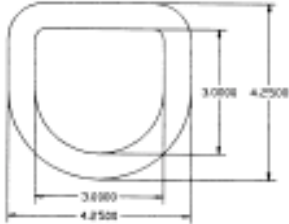
Part Number	Description
B-601	Recessed Rope Ring. Requires 3" mounting hole in 3/8" or thicker material. Zinc plated. Rated capacity 1200 lbs.



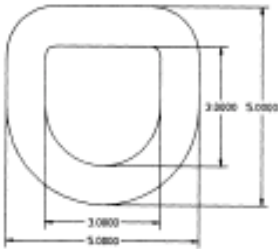
Part Number	Description
B-801	Recessed Rope Ring. Formed 1/8" steel pan houses a ductile iron ring. 3-5/8" diameter hole with 7/8" clearance below surface is required. Zinc plated. Rated Capacity 5000 lbs.



D-RING

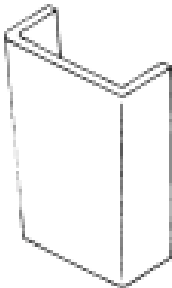


Part Number	Description
B-40	Lashing Ring Assembly with mounting bracket Forged. 5/8" diameter ring is supplied with mounting bracket. Working load limit 6000 lbs.



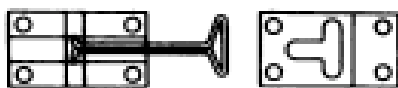
Part Number	Description
B-48	Lashing Ring Assembly with mounting bracket Forged. 1" diameter ring is supplied with mounting bracket. Working load limit 15,000 lbs.

STAKE POCKET



Part Number	Description
7403	Stake Pocket. Stake size 1-1/2 x 3-1/2" 1/4" Thick with 3" depth

DOOR HOLDER HOOKS & KEEPER



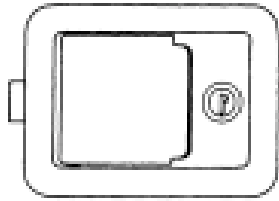
Part Number	Description
DH500	Hook & Keeper Assembly. 4" Hook. Steel stamping Zinc Plated

CAM LOCKS

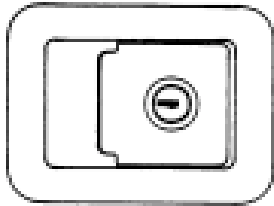

Part Number	Description
#158	Cam Type Lock, Malleable iron cups and lugs combined with steel handle and supports offer simplified installation. For use with 3/4" pipe (not included)



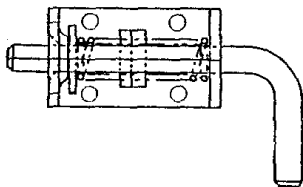
Part Number	Description
#257	Cam Action Side Door Lock. All steel zinc plated. Permanent plastic grip on handle. For use with 3/4" Pipe (not included)



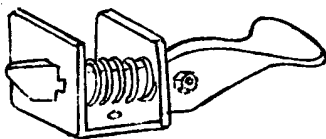
Part Number	Description
L3885	Standard size flush mount with mounting holes. Designed to mount in a 3-3/8" x 4-5/8" recess. Stainless steel finish with locking mechanism.



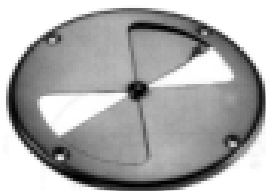
Part Number	Description
L1980	Junior size flush latch. Designed to mount in a 2-3/4"x 3-3/4" recess, Rust proof steel finish with locking mechanism.



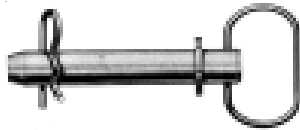
Part Number	Description
B2595LKB	Spring Latch Assembly. Zinc plated. Spring loaded 1/2" dia. Bolt can be locked in the open position. Turning lever allows the bolt to closed under spring pressure, Zinc plated bolt housing mounts with (4) 1/4 Bolts



Part Number	Description
382	Tipper Latch, Spring loaded latch assembly



Part Number	Description
6501	Butterfly vent 7 3/4" dia., polished aluminum



Part Number	Description
31-01	Hitch Pin, 3/8"x 4-38" 4" Effective Length



Part Number	Description
CHA158707	Hitch Pin, 3/8" diameter, 3" usable length
CHA158708	Hitch Pin, 1/2" diameter, 3-1/2" usable length
CHA158701	Hitch Pin, 5/8" diameter, 4-1/2" usable length
CHA158702	Hitch Pin, 5/8" diameter, 6" usable length
CHA158703	Hitch Pin, 3/4" diameter, 4-1/2" usable length
CHA158704	Hitch Pin, 3/4" diameter, 6" usable length
CHA158705	Hitch Pin, 7/8" diameter, 6" usable length
CHA158706	Hitch Pin, 1" diameter, 6" usable length



Part Number	Description
CHA158803	Linch Pin, 5/16" diameter x 1-5/8"
CHA158804	Linch Pin, 7/16" diameter x 1-5/8"
CHA158805	Linch Pin, 1/4" diameter x 1-3/4"



FULTON RATCHET WINCHES



Part Number	Capacity	Ratchet Type	Drum Capacity	Description
T900	900 lbs.	One-Way	15' x 2" Strap	Ratchet Winch
T1100	1100 lbs.	Two-Way	20' x 2" Strap	Ratchet Winch
T1500	1500 lbs.	Two-Way	20' x 2" Strap	Ratchet Winch
T1602	1600 lbs.	Two-Way	20' x 2" Strap	Ratchet Winch
T1801	1800 lbs.	Two-Way	20' x 2" Strap	Ratchet Winch
T2005	2000 lbs.	Two-Way w/ Neutral	20' x 7/16" Rope	Ratchet Winch
T2605	2600 lbs.	Two-Way w/ Neutral	20' x 7/16" Rope	Ratchet Winch
T3700	3700 lbs.	Two-Way w/ Neutral	185' x 7/32" Cable	Ratchet Winch w/ Hand Brake



Part Number	Description
WSP12	Personal Water Craft Winch Strap w/ hook 2"x12" 1800 lbs. Working Load Limit
WS20	Winch Strap w/ hook 2"x20" 1800 lbs. Working Load Limit



Part Number	Description
WC325	Winch Cable w/ Hook 3/16" x 25' 4,200 lbs. Nominal strength
WC750	Winch Cable w/ Hook 7/32" x 50' 5,600 lbs. Nominal strength



TRAILER SAFETY CHAINS W/ CLIP



Part Number	Class	Cap.	Length	Description	Weight
8640110	1	2000	24"	3/16" with S-Hook One End	1.00
8650130	1	2000	48"	3/16" with S-Hook Each End	2.50
8640220	2	3500	36"	1/4" with S-Hook One End	1.95
8650235	2	3500	54"	1/4" with S-Hook Each End	3.00
8604229	3	5000	36"	1/4" with S-Hook One End	2.33
8606138	3	5000	54"	1/4" with S-Hook Each End	3.50
8605734	4	16,000	35"	3/8" High Test Chain w/clevis Slip Hook w/ latch	5.00

BULK CHAIN



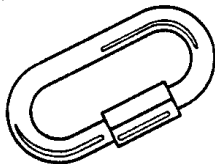
Part Number	Type	Working Load Limit	Wt. Per 100 Ft.	Feet Per Drum
5011134	3/16" (5.5mm) Proof Coil	800 lb.	42	400
5011234	1/4" (7mm) Proof Coil	1300 lb.	61	400
5011434	3/8" (10mm) Proof Coil	2650 lb.	136	200

S-HOOKS W/ CLIP



Part Number	Hook Diameter	Chain	Capacity Size	Weight
7983535	3/8"	3/16"	2000	.08
7983635	7/16"	1/4"	3500	.25
7983735	17/32"	3/8"	5000	.50

QUICK LINK



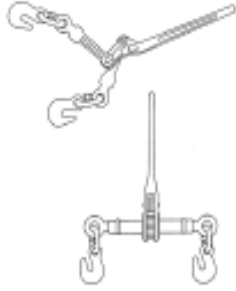
Part Number	Description	Weight
8056135	3/16" Quick Link	.06
8056235	1/4" Quick Link	.10
8056435	3/8" Quick Link	.25



Part Number	Description	Working Load Limit	Weight
5261363	5/16" x 20' Transport Chain	4700 lb.	20
5231462	3/8" x 20' High Test Chain	5400 lb.	29

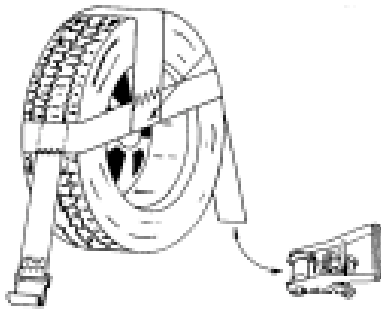


LOAD BINDERS



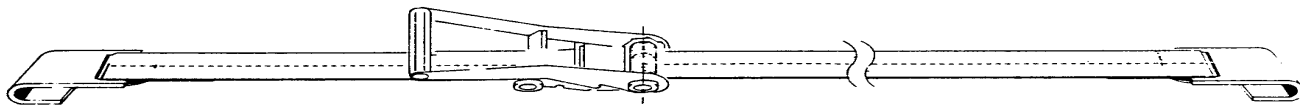
Part Number	Description	Working Load Limit	Weight
5200120	1/4" Lever Load Binder	2600 lb.	3
5200420	5/16" - 3/8" Lever Load Binder	5400 lb.	7.6
5200355	5/16" - 3/8" Ratchet Load Binder	5400 lb.	10

WHEEL TIE DOWNS



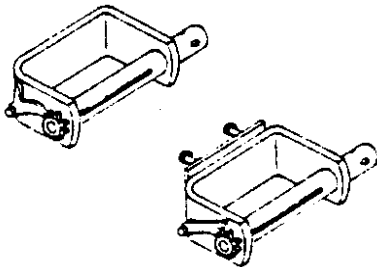
Part Number	Description
1314WTD	Adjustable Tie Down For 13" & 14" Tires (Pair)
1516WTD	Adjustable Tie Down For 15" & 16" Tires (Pair)
STD11	Standard Ratchet for Adjustable Tie Downs (2 Required)

2" HEAVY DUTY RATCHET ASSEMBLY



Part Number	Length	Width	Rated Capacity	End Fittings
SA10X27	27'	2"	10,000 lb.	Flat Hooks

HEAVY DUTY TRAILER WINCHES



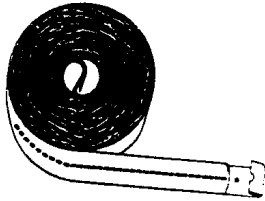
Part Number	Description
16S	Standard fixed mount winch. Fully slotted mandrel. Designed for use with 3" and 4" webbing. Holds 30' of webbing minimum.
16P	Portable mount winch. Designed to mount on side channel using 2 locking bolts. Use with 3" and 4" webbing. Holds 30' of webbing minimum.

COMBINATION WINCH BAR



Part Number	Description
1903065	Combination Winch Bar

WINCH STRAP ASSEMBLY



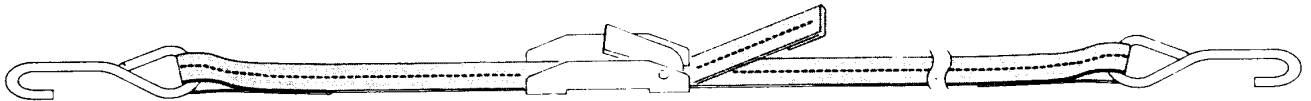
Part Number	Length	Width	Rated Capacity	End Fittings
SA15X27	27'	4"	15,000 lb.	Flat Hooks

1" LIGHT DUTY RATCHET ASSEMBLIES



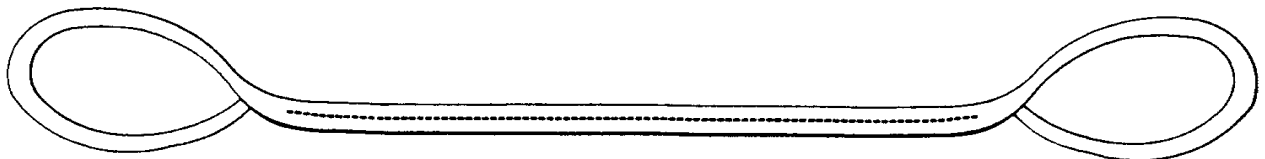
Part Number	Length	Width	LOOP Capacity	End Fittings
R312S	12'	1"	3000 lb.	S-Hooks
R320S	20'	1"	3000 lb.	S-Hooks

1" LIGHT DUTY CAM BUCKLE ASSEMBLIES



Part Number	Length	Width	LOOP Capacity	End Fittings
R212S	12'	1"	2000 lb.	S-Hooks
R220S	20'	1"	2000 lb.	S-Hooks

TOW STRAPS



Part Number	Width	Length	Rated Capacity
12220	2"	20'	12,000 lb.



BOAT ROLLERS



Part Number	Description	Shaft Diameter	Length	Diameter
6334	Molded Guide-on Roller	5/8"	12"	2-1/2"
6335	Molded Guide-on Roller	1/2"	9"	2"



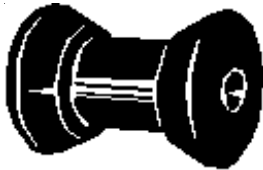
6336		5/8"	2"	2-1/2"
6337		1/2"	1-3/4"	2"



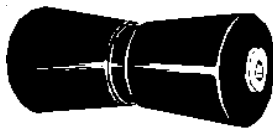
6338	Rocker Roller	3/4"	4-1/4"	4-1/4"
------	---------------	------	--------	--------



6339	Ribbed Rocker Roller	7/8"	3"	4-1/4"
------	----------------------	------	----	--------



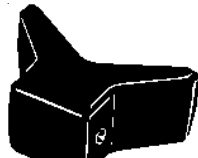
6340	Spool Roller	5/8"	4"	3"
6343	Spool Roller	5/8"	5"	3-1/4"



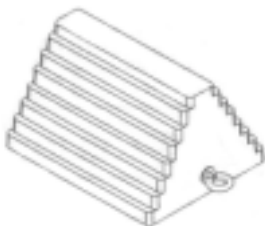
6345	Keel Roller	5/8"	8"	3-1/2"
6346	Keel Roller	5/8"	12"	3-3/4"



6347	Bow Roller	1/2"	3"	3"
------	------------	------	----	----



6348	Y-Stop	1/2"	3"	3"
------	--------	------	----	----



Part Number	Description	Wgt.
WC1086	Heavy Duty Rubber Wheel with Chain Eye	9 lb.

SPARE TIRE CARRIERS



Part Number	Description
ETC	Fulton, Spare Tire Carrier , 4 or 5 lug wheels
ETCLB	Fulton, Spare Tire Carrier, With Pad Lock Brackets
ETCHL	Fulton, Spare Tire Carrier, Complete with Lock
STC100	Fulton, High Mount Spare Tire Carrier. Heavy Duty, welded and reinforced Steel plate construction. Galva-Tec® Finish. Will fit 4 and 5 lug wheels.

HEAVY DUTY SPLASH GUARDS



Part Number	Description	Wgt.
B30LXP	24 x 30" Splash Guard, One Pair	18 lb. per pair
B36LXP	24 x 36" Splash Guard, One Pair	20 lb. per pair
B40LXP	24 x 40" Splash Guard, One Pair	22 lb. per pair



BOTTLE JACKS



Part Number	Description
SUN4904A	4 Ton Bottle Jack
SUN4906A	6 Ton Bottle Jack
SUN4908A	8 Ton Bottle Jack